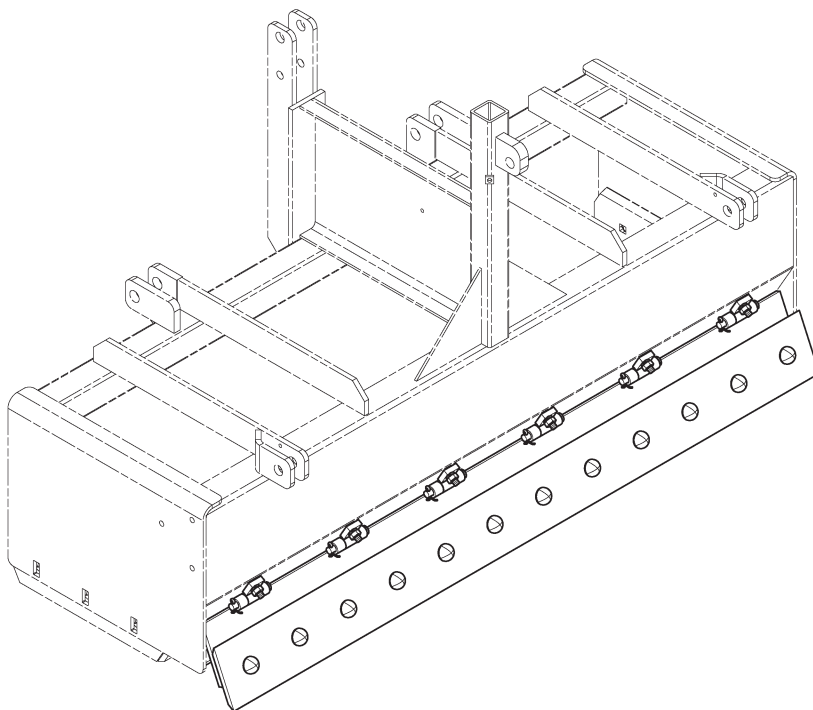


×-----×
Level Best

LASER GRADING BOX

**INSTALLATION &
PARTS MANUAL
FOR
REAR HINGED
CUTTING EDGE KIT**



ATI Corporation
New Holland, PA 17557
Phone (717) 354-8721 • FAX (717) 354-2162
1-800-342-0905
www.level-best.com

APRIL 2006
CAT.# LB-RHCEK-IPM-0406



ATI Corporation
New Holland, PA 17557
Phone (717) 354-8721 • FAX (717) 354-2162
1-800-342-0905
www.level-best.com

COPYRIGHT 2006 by
ATI Corporation
New Holland, PA 17557 U.S.A.

DISCLAIMER

THE INFORMATION IN THIS MANUAL IS PROVIDED TO PROMOTE THE SAFE USE OF, AND ASSIST THE OPERATOR IN ACHIEVING THE BEST PERFORMANCE FROM, THE PRODUCTS DESCRIBED HEREIN WHEN USED FOR THE INTENDED APPLICATION.



ATI Corporation
New Holland, PA 17557
Phone (717) 354-8721 • FAX (717) 354-2162
1-800-342-0905
www.level-best.com

Rear Hinged Cutting Edge Kit

MODELS

| Kit Part Number | Description | Fits Model Numbers |
|------------------------|--|---------------------------|
| 000-190-131 | Rear Hinged Cutting Edge Kit for 5' Grader Box | LBS5 |
| 000-190-132 | Rear Hinged Cutting Edge Kit for 6' Grader Box | LBS6, LBD6 |
| 000-190-133 | Rear Hinged Cutting Edge Kit for 7' Grader Box | LBS7, LBD7 |
| 000-190-134 | Rear Hinged Cutting Edge Kit for 8' Grader Box | LBS8, LBD8 |

Rear Hinged Cutting Edge Kit

TABLE OF CONTENTS



LASER GRADING BOX
ATI Corporation
New Holland, PA 17557
Phone (717) 354-8721 • FAX (717) 354-2162
1-800-342-0905
www.level-best.com

| | |
|---|-----|
| MODELS | ii |
| TABLE OF CONTENTS | iii |
| WHERE TO GET PARTS AND SERVICE..... | iv |
| PARTS & SERVICE | iv |
| HOW TO ORDER PARTS | v |
| LIST OF ILLUSTRATIONS | vi |
| SAFETY, INSTALLATION, OPERATION & MAINTENANCE | 1 |
| Safety | 1 |
| Overview..... | 1 |
| Tools Required..... | 1 |
| Installation | 2 |
| PARTS LIST | 4 |



ATI Corporation
New Holland, PA 17557
Phone (717) 354-8721 • FAX (717) 354-2162
1-800-342-0905
www.level-best.com

Rear Hinged Cutting Edge Kit

PARTS & SERVICE

WHERE TO GET PARTS AND SERVICE

When replacement parts and service are required, ATI Corporation recommends returning to the dealer from which the product or optional kit was purchased. By going to the dealer, you are dealing with people that understand and know ATI products. Our dealers have the experience servicing these machines and stock the most common parts required to keep your equipment in top working condition.

NOTE: ATI Corporation reserves the right to discontinue models at any time, change specifications, and improve design without notice and without incurring obligation on goods previously purchased and to discontinue supplying any part listed, when the demand does not warrant production.

Rear Hinged Cutting Edge Kit

HOW TO ORDER PARTS



ATI Corporation
New Holland, PA 17557
Phone (717) 354-8721 • FAX (717) 354-2162
1-800-342-0905
www.level-best.com

Parts lists contained in this book have been prepared to help you when ordering spare and/or replacement parts. Your order will be filled promptly and accurately when the following information is provided:

1. Model and serial number of the unit. (This specifically identifies the equipment you have and permits us to verify the part numbers in your order.)
2. The parts list page number and catalog number. Include catalog revision number, if applicable.
3. The Item number for each part. Item numbers on the parts list page correspond with the numbers shown on the illustration.
4. Part Number as it appears in the parts list. In most cases this will be a nine-digit number; for example: 200-147-000.
5. The Description for the part as it appears on the parts list page.

The part ordered may have a new part number, or the part may have been replaced by a newer design with a different part number. In these cases your acknowledgement, shipping papers and invoices will be written listing the current part number first; the old part number you referred to will follow the part description.

Our purpose in doing this is to tell you that the parts are fully interchangeable. This will avoid any unnecessary correspondence or delay in processing your order. We suggest that you add any new number to your parts lists for future use.



ATI Corporation
New Holland, PA 17557
Phone (717) 354-8721 • FAX (717) 354-2162
1-800-342-0905
www.level-best.com

Rear Hinged Cutting Edge Kit

LIST OF ILLUSTRATIONS

| | |
|--|---|
| Figure 1. Hardware Box..... | 1 |
| Figure 2. Scribe Lines Marking the Hole Locations..... | 2 |
| Figure 3. Hinge and Cutting Edge Installation | 3 |
| Figure 4. Rear Hinged Cutting Edge Assembly..... | 4 |

Rear Hinged Cutting Edge Kit

SAFETY, INSTALLATION, OPERATION & MAINTENANCE



ATI Corporation
New Holland, PA 17557
Phone (717) 354-8721 • FAX (717) 354-2162
1-800-342-0905
www.level-best.com

SAFETY

SAFETY is our first concern at ATI Corporation. Safety must also be first in the mind of the operator of the Grading Box. Proper maintenance is necessary to complete the safety cycle.

Observe all safety rules, including:

- Operate at a safe distance from bystanders.
- Never perform maintenance or service work such as lubricating, inspecting, clearing debris, etc., while the engine is running. Lower the Grading Box, turn off the engine and remove the key before performing these functions.

OVERVIEW

Level Best Grading Boxes can be equipped with a hinged back blade to allow grading in backward directions. When travelling forward, the standard cutting edge cuts to the desired grade and the back blade pivots out of the way. When travelling in the rearward direction, the back blade pivots down and engages the soil.

The Rear Hinged Cutting Edge Kit consists of a mounting bracket, cutting edge, hinges, and mounting hardware. The quantity of hinges and hardware are based on the model size.

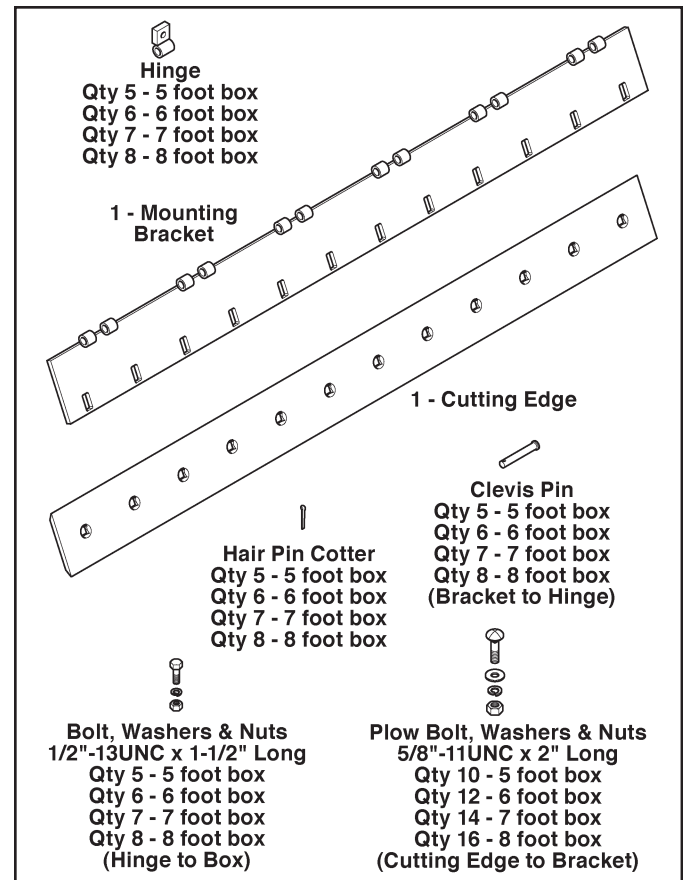


Figure 1. Hardware Box

TOOLS REQUIRED

To complete installation: (2) 3/4" wrenches, (1) 15/16" wrench, 1/2" drill, 17/32" drill bit, center punch, hammer, scribe or marker, pliers, ruler or tape measure.

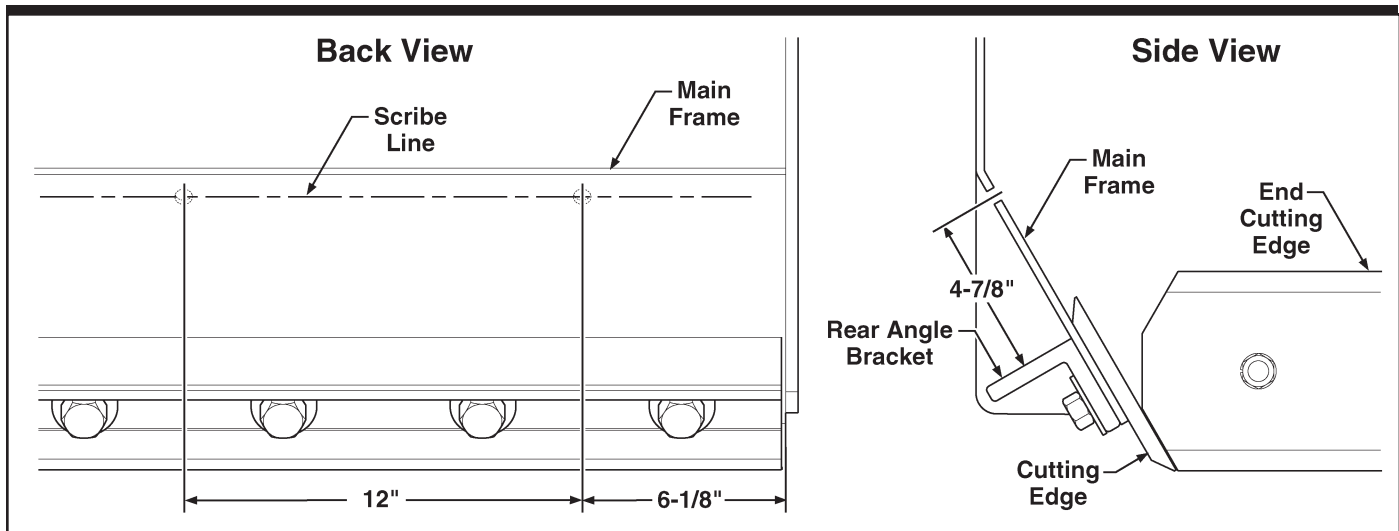


Figure 2. Scribe Lines Marking the Hole Locations

INSTALLATION

1. Position the Grading Box in a level area. If desired, it can be placed on blocking or tilted forward to aid access to the installation area.
2. Scribe a vertical line 6-1/8 in. from the inside of the side plate on one end of the box.
3. Scribe a horizontal line 4-7/8 in. above the rear angle bracket at both ends of the box.
4. Place a vertical line every 12 in. along the back of the grading box. The final mark must be 6-1/8 in. from each end.

CAUTION

Be sure blade is centered. Failure to center the back blade between the side plates may result in interference with the side plate after installation.

5. Use a punch or scribe to mark the hole location at the intersection of the horizontal line and each vertical line. The 5 ft. box has 5 marks, the 6 ft. box has 6 marks, the 7 ft. box has 7 marks, and the 8 ft. box has 8 marks.
6. Drill a 17/32 in. hole at each mark. Remove any burrs at the holes.
7. From the front side of the box, place a 1/2 x 1-1/2 in. bolt through the hole. From the back side of the box, place a hinge, lock washer and hex nut loosely on the bolt.

NOTE: If the hinge hardware is tightened, pin holes may not align.

8. Repeat step 7 for the hole at the other end of the Grading Box.
9. Position the mounting bracket in the two installed hinges, placing the clevis pin through the bracket and hinge. Secure each clevis pin with a cotter pin.

Rear Hinged Cutting Edge Kit

SAFETY, INSTALLATION, OPERATION & MAINTENANCE

Level Best

LASER GRADING BOX

ATI Corporation
New Holland, PA 17557

Phone (717) 354-8721 • FAX (717) 354-2162

1-800-342-0905

www.level-best.com

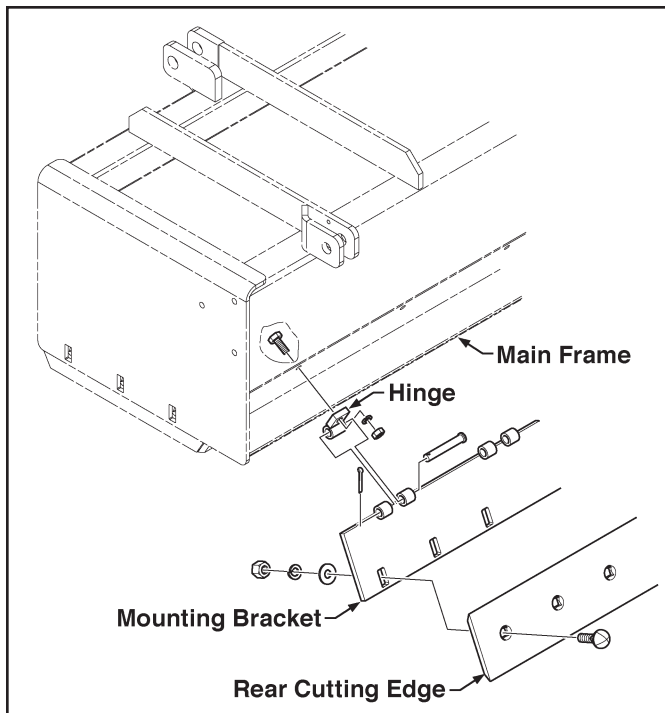


Figure 3. Hinge and Cutting Edge Installation

10. Repeat step 7 for each of the remaining holes. Once the hinge is installed, insert the clevis pin and secure with the cotter pin.
11. Tighten all hinge bolts.

WARNING

Keep fingers and toes clear of the cutting edge. It is heavy and sharp and, if dropped, could cause severe cuts.

12. Place cutting edge on the mounting bracket with tapered edge toward the bracket. Loosely install plow bolts, flat washers, lock washers and nuts.

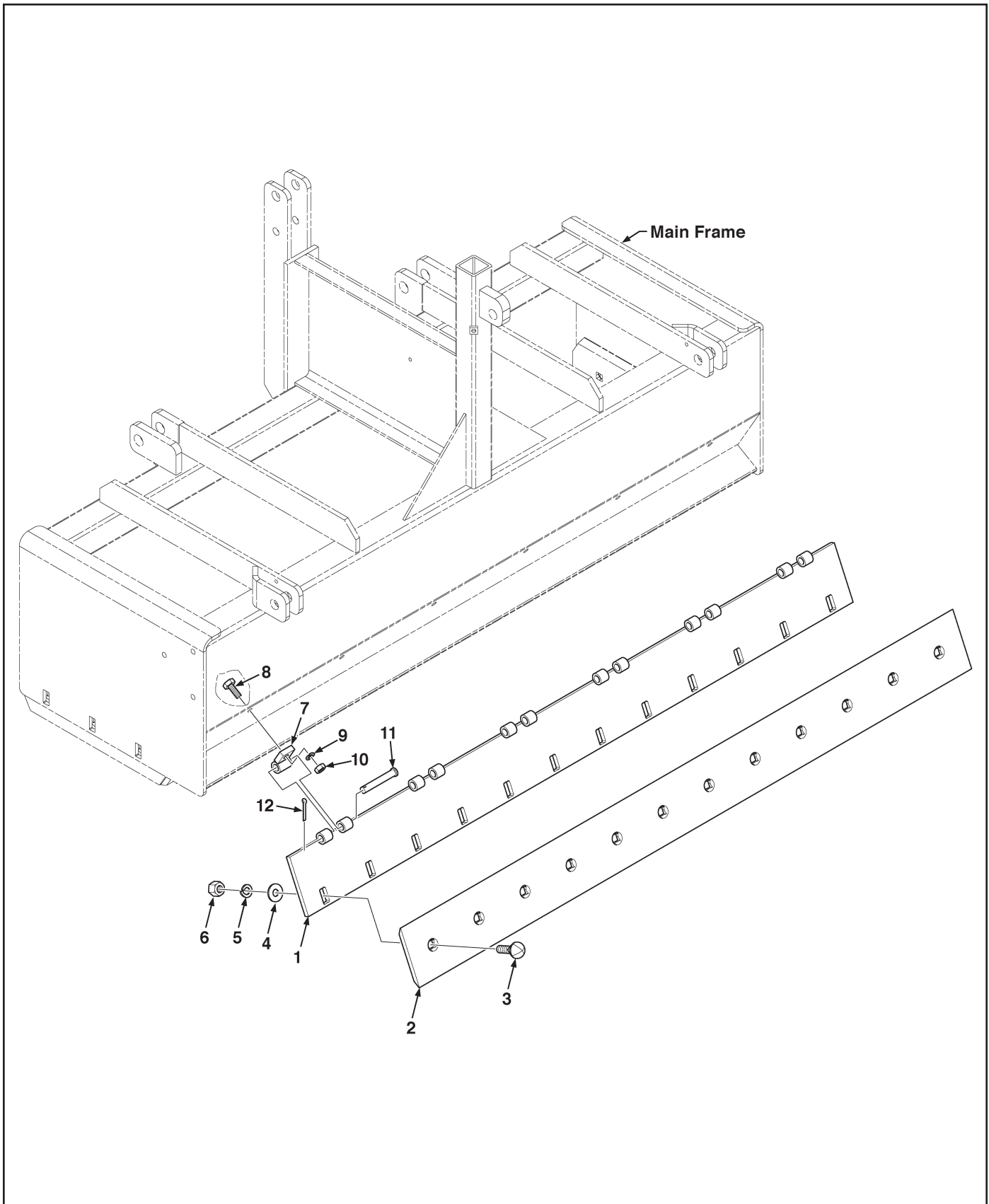
NOTE: If the Grading Box has been placed on blocks or tilted front, it must be levelled at this time.

13. With the Grading Box level, position the rear cutting edge to the desired depth. It is recommended that the rear cutting edge be placed 1/8 in. lower than the front cutting edge. If desired, it can be set evenly with the front cutting edge if grade demands it. Keep in mind that the box is tilted rearward slightly to prevent the side plates from digging during turning.
14. Once the desired depth is set, tighten all the hardware securing the cutting edge to the mounting bracket.

Rear Hinged Cutting Edge Kit

PARTS LIST

Figure 4. Rear Hinged Cutting Edge Assembly



Rear Hinged Cutting Edge Kit



PARTS LIST

Figure 4. Rear Hinged Cutting Edge Assembly

ATI Corporation
 New Holland, PA 17557
 Phone (717) 354-8721 • FAX (717) 354-2162
 1-800-342-0905
 www.level-best.com

| Item | Part No. | Qty | Description |
|------|-------------|-----|--|
| | 000-190-131 | 1 | Rear Hinged Cutting Edge Kit, 60" Long, Includes Items 1 thru 12 |
| | 000-190-132 | 1 | Rear Hinged Cutting Edge Kit, 72" Long, Includes Items 1 thru 12 |
| | 000-190-133 | 1 | Rear Hinged Cutting Edge Kit, 84" Long, Includes Items 1 thru 12 |
| | 000-190-134 | 1 | Rear Hinged Cutting Edge Kit, 96" Long, Includes Items 1 thru 12 |
| 1 | 315-562-000 | 1 | Bracket, Mounting, Rear, Hinged, 60" Long |
| | 315-558-000 | 1 | Bracket, Mounting, Rear, Hinged, 72" Long |
| | 315-559-000 | 1 | Bracket, Mounting, Rear, Hinged, 84" Long |
| | 315-560-000 | 1 | Bracket, Mounting, Rear, Hinged, 96" Long |
| 2 | 000-190-128 | 1 | Edge, Cutting, DBF, 60" Long |
| | 000-190-075 | 1 | Edge, Cutting, DBF, 72" Long |
| | 000-190-077 | 1 | Edge, Cutting, DBF, 84" Long |
| | 000-190-079 | 1 | Edge, Cutting, DBF, 96" Long |
| 3 | 000-150-263 | AR | Bolt, Plow, 5/8"-11UNC x 2" Long |
| 4 | LP | AR | Washer, Flat, 5/8" |
| 5 | 000-155-077 | AR | Washer, Lock, 5/8" |
| 6 | 000-158-138 | AR | Nut, Hex, 5/8"-11UNC |
| 7 | 315-561-000 | AR | Hinge, Back Blade |
| 8 | LP | AR | Bolt, Hex Head, 1/2"-13UNC x 1-1/2" Long |
| 9 | LP | AR | Washer, Lock, 1/2" |
| 10 | LP | AR | Nut, Hex, 1/2"-13UNC |
| 11 | 000-161-008 | AR | Pin, Clevis, 5/8" Dia. x 4" Long |
| 12 | LP | AR | Pin, Cotter, 1/8" Dia. x 1-1/4" Long |

AR - As Required NSS - Not Serviced Separately ASN - After Serial No. BSN - Before Serial No. LP - Local Purchase