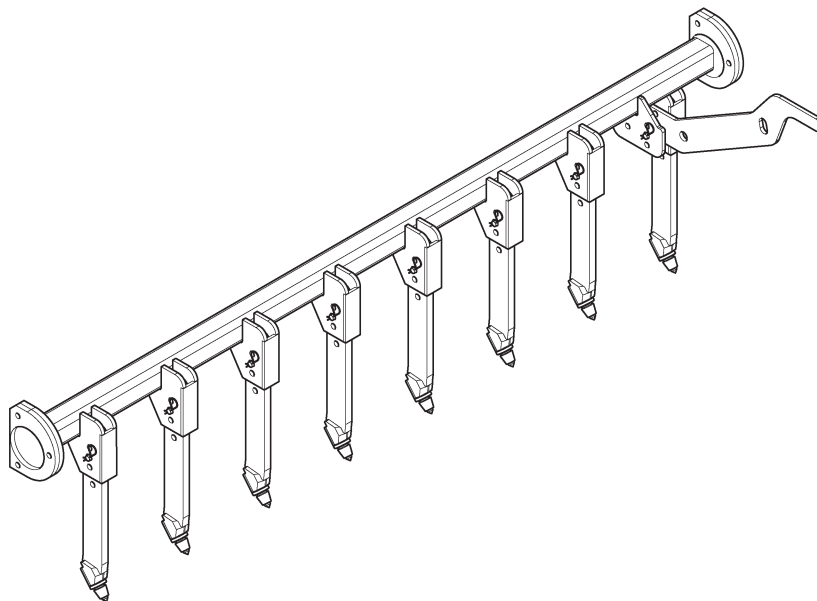


Level Best

LASER GRADING BOX

**INSTALLATION &
PARTS MANUAL
FOR
SCARIFIER KIT**



ATI Corporation
New Holland, PA 17557
Phone (717) 354-8721 • FAX (717) 354-2162
1-800-342-0905
www.level-best.com

MAY 2006
CAT.# LGBSIPM-0506



ATI Corporation
New Holland, PA 17557
Phone (717) 354-8721 • FAX (717) 354-2162
1-800-342-0905
www.level-best.com

**COPYRIGHT 2006 by
ATI Corporation
New Holland, PA 17557 U.S.A.**

DISCLAIMER

THE INFORMATION IN THIS MANUAL IS PROVIDED TO PROMOTE THE SAFE USE OF, AND ASSIST THE OPERATOR IN ACHIEVING THE BEST PERFORMANCE FROM, THE PRODUCTS DESCRIBED HEREIN WHEN USED FOR THE INTENDED APPLICATION.



ATI Corporation
 New Holland, PA 17557
 Phone (717) 354-8721 • FAX (717) 354-2162
1-800-342-0905
www.level-best.com

Scarifier Kit

MODELS

Kit Part Number	Description	Fits Model Numbers
315-538-000	Scarifier Kit for Box, Grader, Tractor, Single, 6'	LBS6
315-539-000	Scarifier Kit for Box, Grader, Tractor, Single, 7'	LBS7
315-540-000	Scarifier Kit for Box, Grader, Tractor, Single,, 8'	LBS8
315-538-000	Scarifier Kit for Box, Grader, Tractor, Double, 6'	LBD6
315-539-000	Scarifier Kit for Box, Grader, Tractor, Double, 7'	LBD7
315-540-000	Scarifier Kit for Box, Grader, Tractor, Double, 8'	LBD8

Scarifier Kit

TABLE OF CONTENTS



ATI Corporation
New Holland, PA 17557
Phone (717) 354-8721 • FAX (717) 354-2162
1-800-342-0905
www.level-best.com

MODELS	ii
TABLE OF CONTENTS	iii
WHERE TO GET PARTS AND SERVICE.....	IV
PARTS & SERVICE	iv
HOW TO ORDER PARTS	v
LIST OF ILLUSTRATIONS	vi
SAFETY, INSTALLATION, OPERATION & MAINTENANCE	1
SAFETY.....	1
TOOLS REQUIRED	1
INSTALLATION	1
PARTS LIST	4



ATI Corporation
New Holland, PA 17557
Phone (717) 354-8721 • FAX (717) 354-2162
1-800-342-0905
www.level-best.com

Scarifier Kit

PARTS & SERVICE

WHERE TO GET PARTS AND SERVICE

When replacement parts and service are required, ATI Corporation recommends returning to the dealer from which the product or optional kit was purchased. By going to the dealer, you are dealing with people that understand and know ATI products. Our dealers have the experience servicing these machines and stock the most common parts required to keep your equipment in top working condition.

NOTE: ATI Corporation reserves the right to discontinue models at any time, change specifications, and improve design without notice and without incurring obligation on goods previously purchased and to discontinue supplying any part listed when the demand does not warrant production.

Scarifier Kit

HOW TO ORDER PARTS



ATI Corporation
New Holland, PA 17557
Phone (717) 354-8721 • FAX (717) 354-2162
1-800-342-0905
www.level-best.com

Parts lists contained in this book have been prepared to help you when ordering spare and/or replacement parts. Your order will be filled promptly and accurately when the following information is provided:

1. Model and serial number of the unit. (This specifically identifies the equipment you have and permits us to verify the part numbers in your order.)
2. The parts list page number and catalog number. Include catalog revision number, if applicable.
3. The Item number for each part. Item numbers on the parts list page correspond with the numbers shown on the illustration.
4. Part Number as it appears in the parts list. In most cases this will be a nine-digit number; for example: 200-147-000.
5. The Description for the part as it appears on the parts list page.

The part ordered may have a new part number, or the part may have been replaced by a newer design with a different part number. In these cases your acknowledgement, shipping papers and invoices will be written listing the current part number first; the old part number you referred to will follow the part description.

Our purpose in doing this is to tell you that the parts are fully interchangeable. This will avoid any unnecessary correspondence or delay in processing your order. We suggest that you add any new number to your parts lists for future use.



ATI Corporation
New Holland, PA 17557
Phone (717) 354-8721 • FAX (717) 354-2162
1-800-342-0905
www.level-best.com

Scarifier Kit

LIST OF ILLUSTRATIONS

Figure 1. Hardware Box.....	1
Figure 2. Side View Mounting Blocks.....	2
Figure 3. Side View Scarifier	2
Figure 4. Top View.....	3
Figure 5. Scarifier Transport and Working Positions	3
Figure 6. Scarifier Assembly.....	4

Scarifier Kit

SAFETY, INSTALLATION, OPERATION & MAINTENANCE



ATI Corporation
New Holland, PA 17557
Phone (717) 354-8721 • FAX (717) 354-2162
1-800-342-0905
www.level-best.com

SAFETY

SAFETY is our first concern at ATI Corporation. Safety must also be first in the mind of the operator of the laser grading box. Proper maintenance is necessary to complete the safety cycle.

Observe all safety rules, including:

- Operate at a safe distance from bystanders.
- Never perform maintenance or service work such as lubricating, inspecting, clearing debris, etc., while the engine is running. Shut off the engine and remove the key before performing these functions.

TOOLS REQUIRED

To complete installation: (2)9/16" wrenches, (2)1/2" wrenches, (2)3/4" wrenches, 1/2" Electric Drill, 17/32" Drill Bit, Hacksaw and (2) "C" Clamps or equivalent, Center Punch, Hammer, 1/4" Drill Bit (Optional).

INSTALLATION

1. The Scarifier Installation Kit was shipped in two items; scarifier bar assembly and hardware box. See Figure 1 for items in the hardware box. If any parts are missing from the hardware box, please contact your dealer immediately.
2. Slide mounting blocks into the upper rear corners of the grader box. Side A should fit up against the top lip of the backsheet. Side B should fit back against the backsheet. The mounting blocks will be notched (C) to clear the weld on the inside of the box See Figure 2.

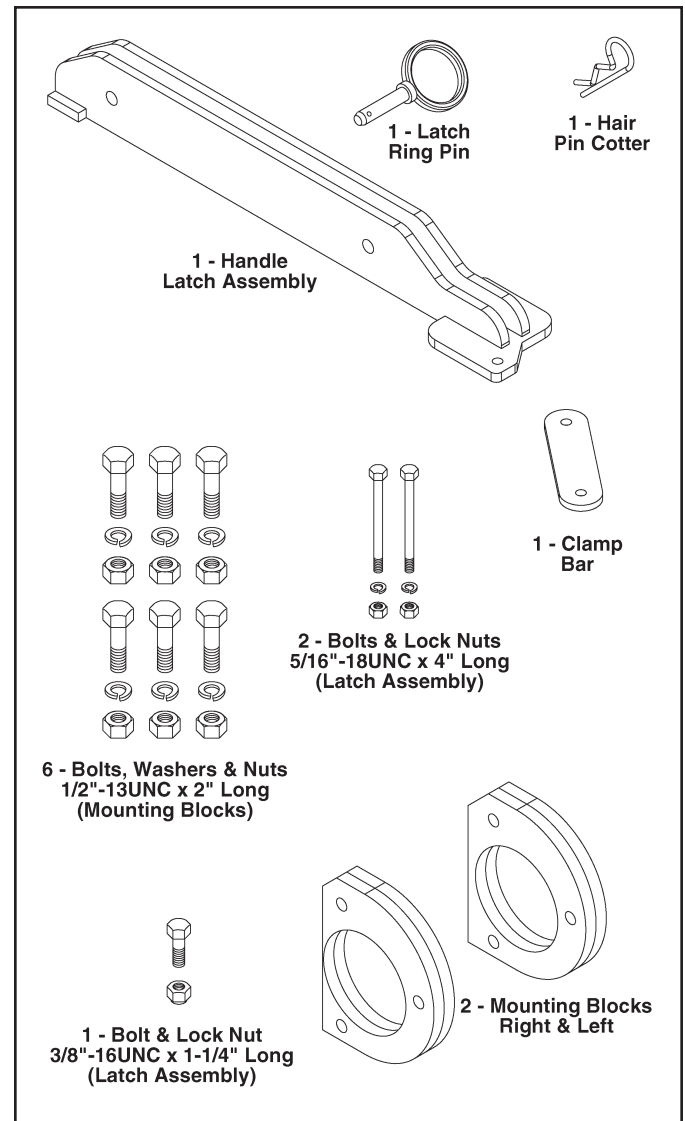


Figure 1. Hardware Box

NOTE: If your grader box is pre-drilled go to step 5.

3. Clamp the mounting blocks to the end plates. Using a center punch mark the center of the bolt holes (6).

SAFETY, INSTALLATION, OPERATION & MAINTENANCE

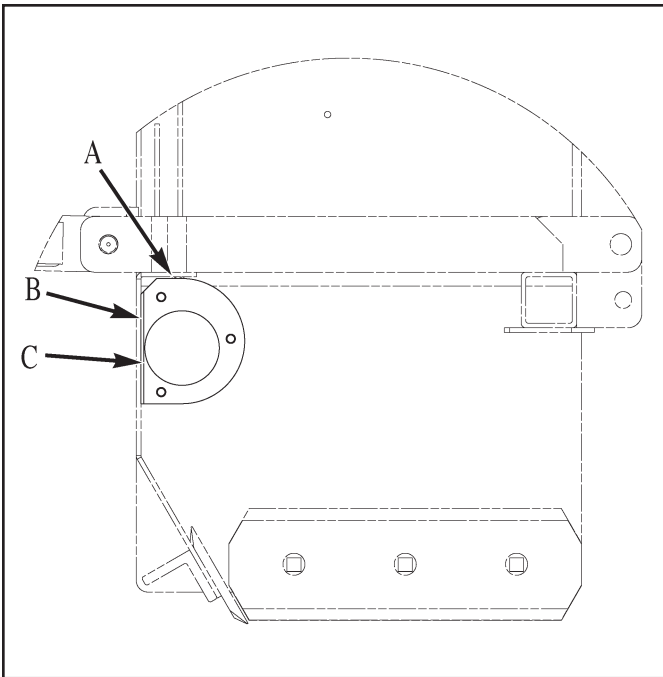


Figure 2. Side View Mounting Blocks

4. Remove the mounting blocks and drill the holes using a 17/32" drill bit. (To ease installation drill a 1/4" pilot hole from the inside, then drill a 17/32" hole from outside.)

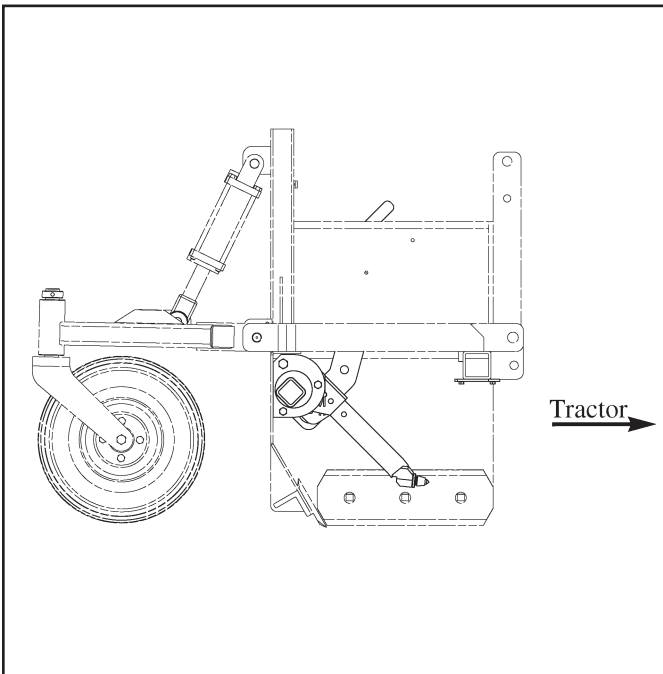


Figure 3. Side View Scarifier

5. Slide mounting blocks on the scarifier tube so that the scarifier bar bullet teeth would be pointing towards the front of the box (toward the tractor). Lift mounting blocks into place and insert 1/2"- 13UNC x 2" long bolts into the top holes See Figure 3.
6. Double check that mounting blocks are on the correct sides and that the bullet teeth are pointing in the correct direction.
7. Install the remaining bolts and fasten using the appropriate lock washers and nuts. (If the handle was removed, reinstall it now.)
8. Using the handle as a guide, center the handle latch assembly so that the handle is between the two bars of the assembly See Figure 4.
9. Use the clamp bar and two 5/16"-18UNC x 4" long bolts, with locknuts, to secure the latch handle assembly to the square tube on the front of the grader box.
10. Mark the center of hole A (Figure 4). Remove handle latch assembly. Drill a 13/32" hole.

Scarifier Kit

SAFETY, INSTALLATION, OPERATION & MAINTENANCE



ATI Corporation
New Holland, PA 17557
Phone (717) 354-8721 • FAX (717) 354-2162
1-800-342-0905
www.level-best.com

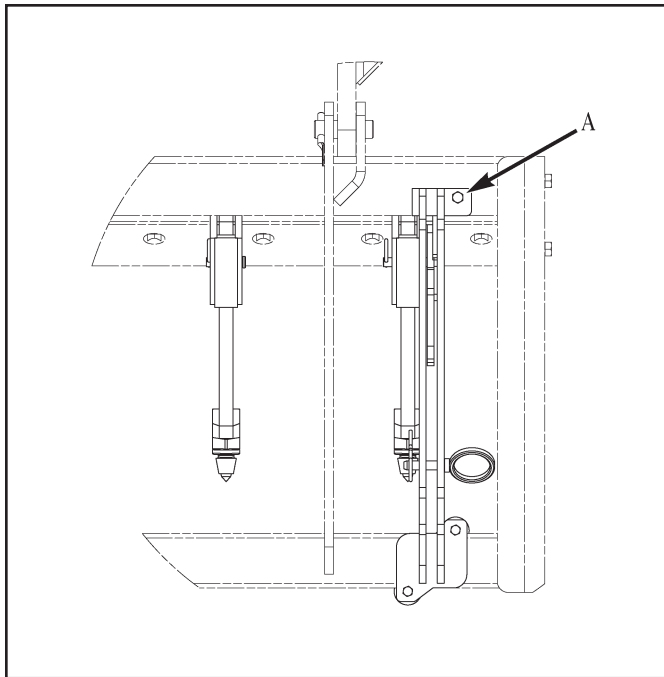


Figure 4. Top View

11. Reinstall handle latch assembly and fasten using the clamp bar, and a 3/8"-16UNC x 1-1/4" long bolt with locknut for hole A.
12. Insert latch ring pin so the scarifier teeth are up in transport mode See Figure 5.

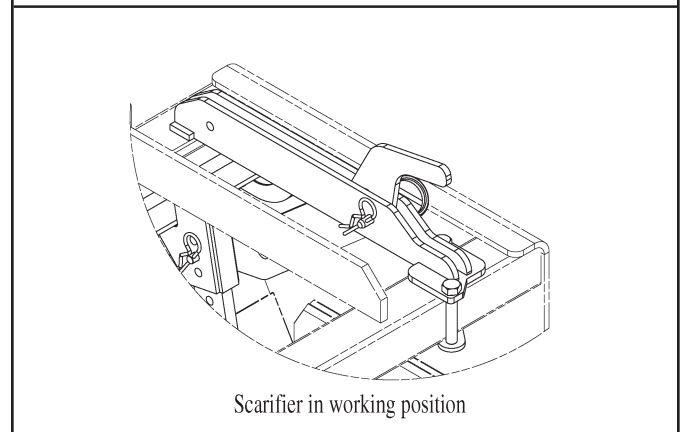
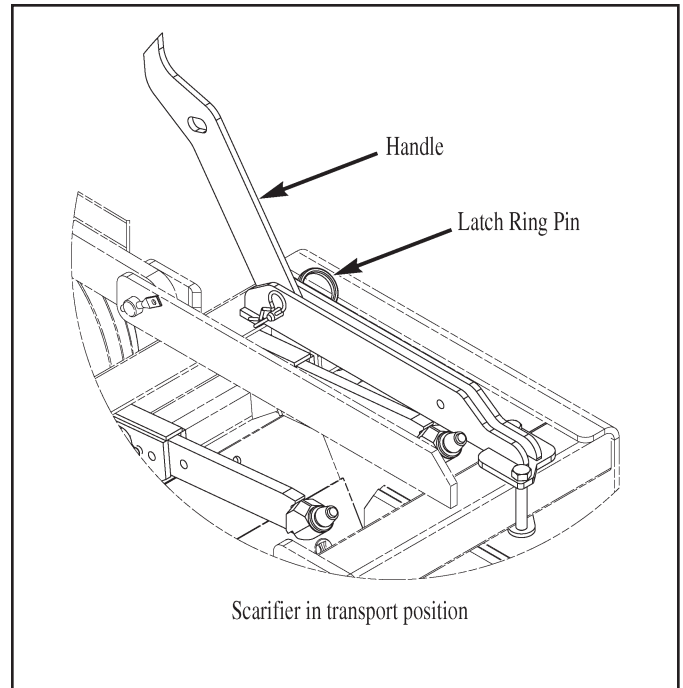
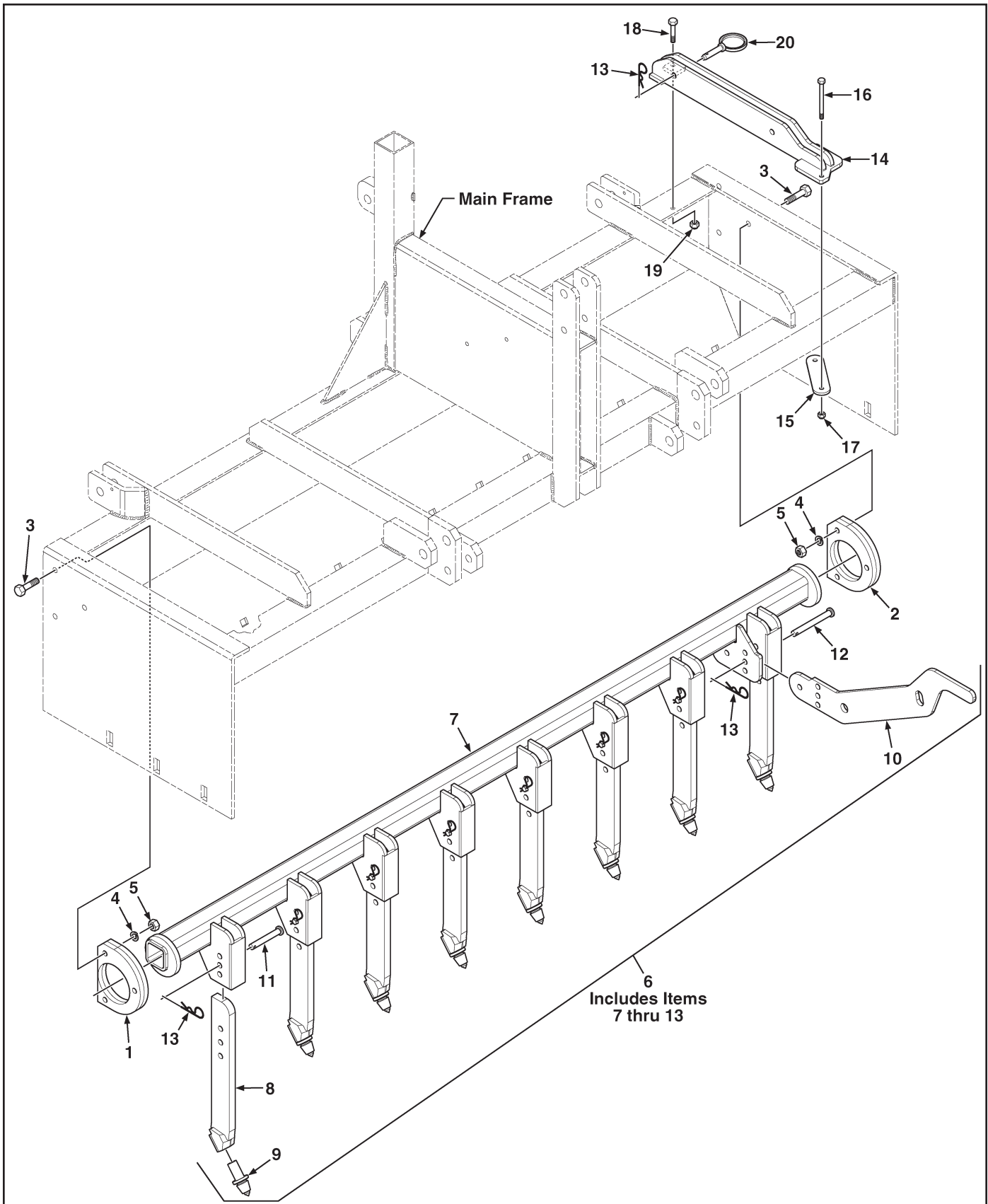


Figure 5. Scarifier Transport and Working Positions

Scarifier Kit

PARTS LIST

Figure 6. Scarifier Assembly



Scarifier Kit



PARTS LIST

Figure 6. Scarifier Assembly

ATI Corporation
 New Holland, PA 17557
 Phone (717) 354-8721 • FAX (717) 354-2162
1-800-342-0905
www.level-best.com

Item	Part No.	Qty	Description
	315-538-000	1	Kit, Scarifier Assembly, 6' Box
	315-539-000	1	Kit, Scarifier Assembly, 7' Box
	315-540-000	1	Kit, Scarifier Assembly, 8' Box
			Includes Items 1 thru 20
1	315-518-000		Block, Mounting, Right
2	315-517-000	1	Block, Mounting, Left
3	LP	6	Bolt, Hex Head, 1/2"-13UNC x 2" Long
4	LP	6	Washer, Lock, 1/2"
5	LP	6	Nut, Hex, 1/2"-13UNC
6	315-535-000	1	Bar Assembly, Scarifier, 6'
	315-536-000	1	Bar Assembly, Scarifier, 7' (Shown)
	315-537-000	1	Bar Assembly, Scarifier, 8'
			Includes Items 7 thru 13
7	315-513-000	1	Tube Assembly, Scarifier, Manual, 6'
	315-514-000	1	Tube Assembly, Scarifier, Manual, 7' (Shown)
	315-515-000	1	Tube Assembly, Scarifier, Manual, 8'
8	315-516-000	AR	Shank Assembly, With Bit Block
9	001-001-054	AR	Bit, Carbide-Tipped
10	315-513-008	1	Handle, Scarifier
11	000-161-072	AR	Pin, Clevis, 1/2" Dia. x 2" Long
12	000-161-073	1	Pin, Clevis, 1/2" Dia. x 3" Long
13	000-161-019	AR	Pin, Hair, Cotter, 3/16" x 3-3/4" Long
14	315-519-000	1	Latch Assembly, Handle, Scarifier
15	315-519-004	1	Bar, Clamp
16	LP	2	Bolt, Hex Head, 5/16"-18UNC x 4" Long
17	LP	2	Nut, Hex, Nylon Lock, 5/16"-18UNC
18	LP	1	Bolt, Hex Head, 3/8"-16UNC x 1" Long
19	LP	1	Nut, Hex, Nylon Lock, 3/8"-16UNC
20	000-161-074	1	Pin, Ring, Latch, 1/2" Dia. x 2"

AR - As Required NSS - Not Serviced Separately ASN - After Serial No. BSN - Before Serial No. LP - Local Purchase